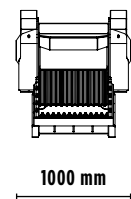
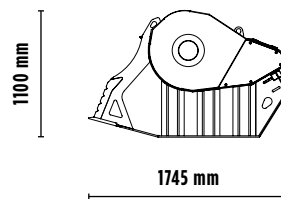
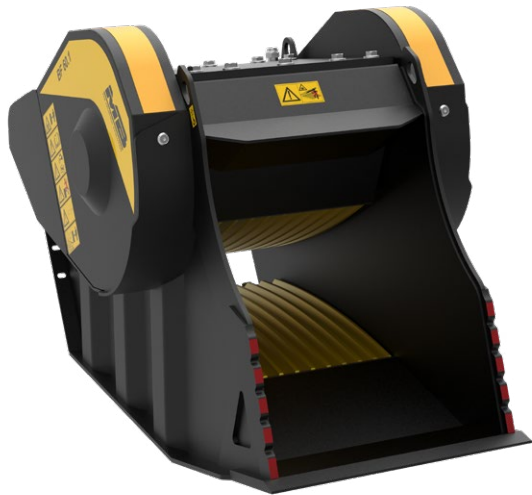


# BF 60.1 S4




## ACCESSORIES

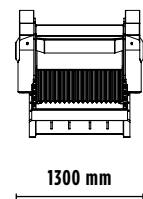
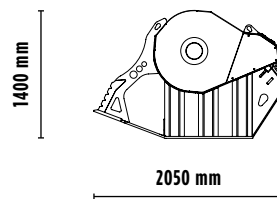
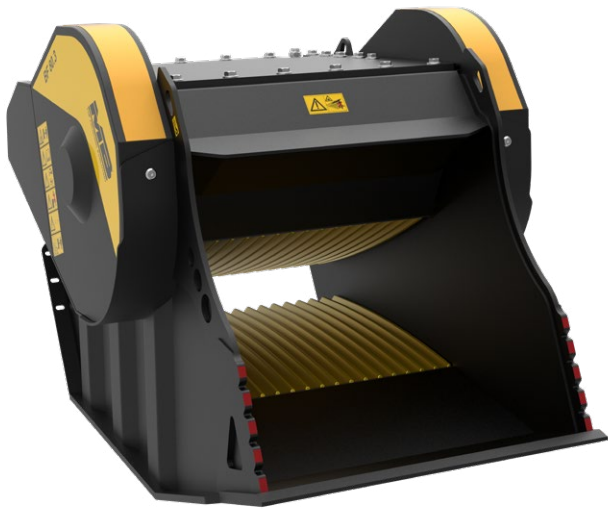
- RECOMMENDED SPARE PARTS KIT
- FIX COUPLER
- IRON SEPARATOR
- HOUR METER
- DUST SUPPRESSION KIT
- 24 MONTHS WARRANTY



## SPECIFICATIONS

EQUIPMENT	 $\geq 8$ Ton
LOAD CAPACITY	0,55 m <sup>3</sup>
OPENING DIMENSIONS	L 610 H 500 mm
OUTPUT SETTING	$\geq 15 \leq 130$ mm
DIMENSIONS	1745 x 1000 H 1100 mm
OIL FLOW	98 l/min.
PRESSURE	$> 220$ bar
WEIGHT	1,6 Ton


# BF 80.3 S4



## ACCESSORIES

- RECOMMENDED SPARE PARTS KIT
- FIX COUPLER
- IRON SEPARATOR
- HOUR METER
- DUST SUPPRESSION KIT
- 24 MONTHS WARRANTY

## SPECIFICATIONS

EQUIPMENT	 $\geq 18,5$ Ton
LOAD CAPACITY	0,70 m <sup>3</sup>
OPENING DIMENSIONS	L 850 H 510 mm
OUTPUT SETTING	$\geq 15 \leq 135$ mm
DIMENSIONS	2050 x 1300 H 1400 mm
OIL FLOW	160 l/min.
PRESSURE	$> 220$ bar
WEIGHT	3 Ton

